

A STAR IS BORN

the ultimate skin analysis experience



Soft
FX



THE NEXT GENERATION SKIN TECHNOLOGY ANALYSER

Discover the exclusive **SoftFX** skin analyser designed to support your aesthetics business and enhance professionalism, for all skin care operators. Identifying skin care concerns and monitoring progress is essential to establishing a skin care plan for your clients and assuring tailored advice over time.

The **Soft FX** provides a variety of exclusive features that meet the needs of professionals including the latest rapid analysis solutions, various consultations for different areas of the body, comparison of results and images before and after treatment and emailing skin reports.

Compact, fully stand-alone device. Customer reports and files are stored on the device

Selfie front-face camera feature for targeted, personalized skin care

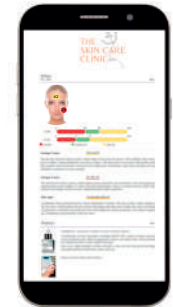
Completely wireless, rapid recharge probes

Rapid readings of skin conditions and visual imaging in a single device

Iconic design, features and functions.
Clever, brilliant HDMI 10.1 inch full angle touch screen

Bang on trend, ultimate digital solutions.

Reports delivered to smartphone, tablet (iOS and Android) or via email from device.



Soft
FX

EXCLUSIVE MULTIPLE-USE SKIN ANALYSIS

which covers all your client skin care concerns



/ RAPID TESTS - PROBES

The smart probes and strips deliver real-time measurement of the skin to identify key skin care concerns. Simply press on the skin and view the results of:

- ◆ Hydration
- ◆ Elasticity
- ◆ Melanin
- ◆ Sebum
- ◆ pH

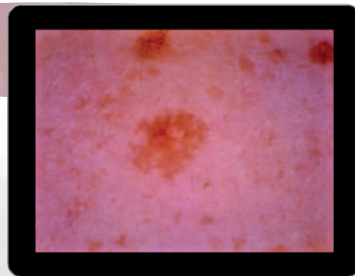


/ BRILLIANT VISUAL IMAGING - CAMERA

Clear, HD imaging shows your clients what skin really looks like whilst the computer vision assessment of images delivers the information you need to explain skin/hair issues and recommendations.

- ◆ Pigmentation
- ◆ Wrinkles
- ◆ Redness
- ◆ Hair Diameter
- ◆ Hair Density
- ◆ Pores
- ◆ Texture
- ◆ Keratin
- ◆ Hair Structure
- ◆ Dandruff

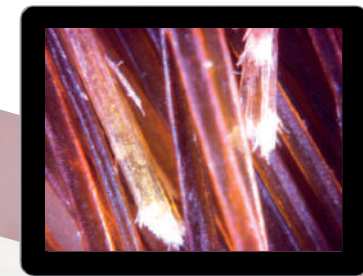
Visual imaging with camera - examples



PIGMENTATION



KERATIN



HAIR STRUCTURE

CONSULTATIONS

The consultations are very user-friendly, fully guided assessments, using the probes only and/or visual imaging with the camera, which deliver unparalleled skin analysis of different areas of the body.

Consultations include:



COMPLEXION

Check Up

Developed to identify and assess key concerns of the skin including pH, hydration, sebum and elasticity levels. A must for first-time analysis of the skin.

Check Up Pro

As above. Also includes HD visual imaging of skin with a camera.

Phototype

Classifies skin type in terms of response to ultraviolet radiation (UVR) exposure.

Age Perfect

Identify key signs of skin ageing, including elasticity, sebum, melanin uniformity and hydration levels supporting you to deliver the care requires.

Age Perfect Pro

As above. Also includes pH and HD visual imaging of skin with a camera.

Sun Protection

Developed to advise the sun protection for each skin type exclusively based on the phototype and the conditions of exposure.



Screenshot of consultations available (complexion)

Purity

For blemished and impure skin which often has an unbalanced oil and moisture mantle leading to sensitive skin.

Sensit.y

This skin check assesses parameters essential to understanding skin sensitivity and what to do about it.

Illumin.y

Looking to achieve glowing, brighter and even skin? This consultation assesses several parameters including hydration, melanin uniformity, skin texture and level of dead skin cells.



HAIR

Scalp Focus

Great hair starts from a healthy scalp. This is a thorough condition of scalp assessment on which to base your recommendations.



DÉCOLLETÉ

Décolleté Expert

A unique consultation assesses the skin of the delicate area of the décolletage subject to ageing and loss of tone.



HANDS

Hands Beauty

Hands show the first signs of ageing and are subject to a tough time. This consultation focuses on skin ageing and sensitivity.

EXCLUSIVE "CREATE YOUR OWN CONSULTATION" FEATURE

Develop unique consultations for the **complexion**, **hair** or **body** with the **Soft FX** based on your client skin care requirements and treatments/products on offer.

RESULTS

Full report delivered on a **smartphone, tablet** (iOS or Android) or **via email** from device.



Sebum
Face / Sebum 2020 - 12 - 01

62

T zone: 40 (Dry), 60 (Normal), 100 (Oily)

U zone: 27 (Dry), 47 (Normal), 100 (Oily)

● Dry skin ● Normal skin ● Oily skin

Average T zone: Oily skin 62

The skin has excessive sebum content, which makes it look oily and uneven. This condition often causes pores to dilate, causing blackheads and spots to appear. Oily skin needs to be treated with specific products that regulate sebum production and prevent the appearance of blemishes. Daily deep cleansing and regular exfoliation treatments are also essential.

Average U zone: Dry skin 24

The skin has low sebum content, which makes it more vulnerable and contributes to the early appearance of expression lines and wrinkles. To restore the skin's lipid balance, choose a cosmetic beauty routine with products that deeply nourish the skin, supplementing the lipid component.

Skin type: Combination skin 43

Combination skin is characterized by uneven distribution of sebum. This type of skin is quite common and has dry areas, usually cheeks and eye contour alternating with oily areas, usually chin, nose and forehead. It is important to normalize and purify the areas with heightened sebum production, but without neglecting the nourishment and protection of the dry areas.

Products 2020 - 12 - 01

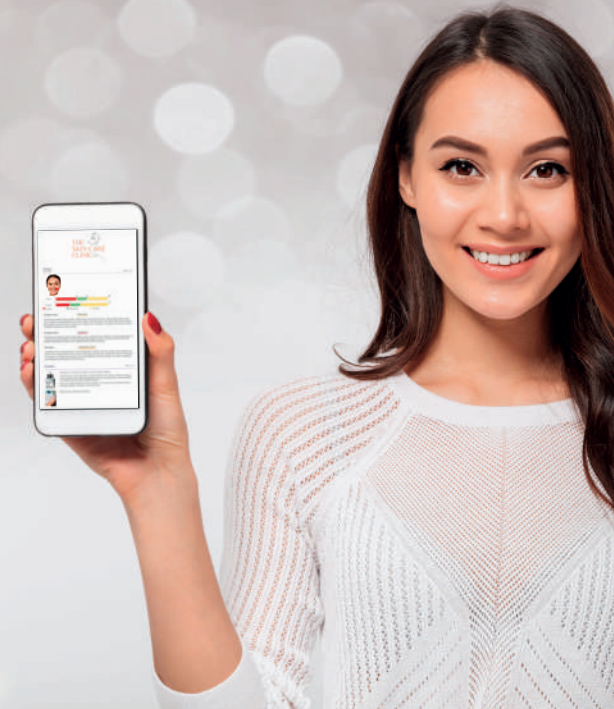
PHORMULIS - BALANCE & PURIFY, 02 OIL CONTROL SERUM.
A combination of active ingredients, including OLESS CITY, organic coriander and lemon, work to purify the skin, refine the appearance of pores and reduce shine. Oil and blemishes are reduced, the skin is toned, uniform and matt.
How to use: Apply sparingly morning and night to clean, dry skin. Tap gently with fingers until fully absorbed. Avoid direct contact with eyes.

REBALANCING SEBUM TREATMENT

RESULTS
remove subjective interpretation

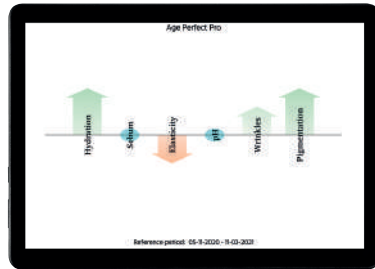
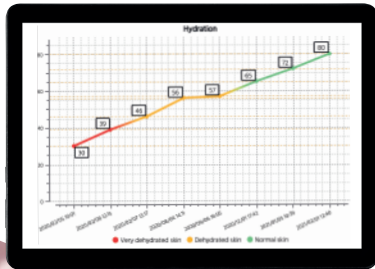
COMMENTS AND ADVICE
support your assessment

PRODUCT/TREATMENT RECOMMENDATION
based on results delivered

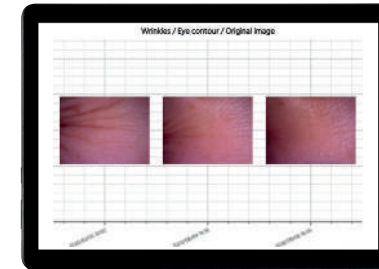
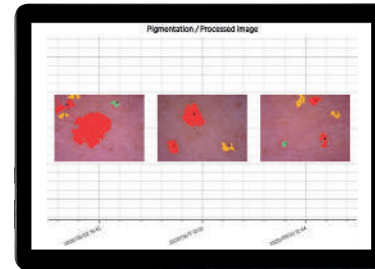


TRACK TRENDS AND MONITOR PROGRESS OVER TIME

Track your client skincare trends over time.



Compare images of skin before and after treatment.



405278_rev.002

/ TECHNICAL SPECIFICATIONS

DISPLAY	TFT 10.1" with capacitive multi-touch screen
FULL FACE CAMERA	5MP 2592x1944 max resolution Auto focus 60° View Angle
CONNECTIVITY	Ethernet, WiFi, WiFi Hotspot The probes are connected to the central unit through Bluetooth Low Energy connection, with exception to the USB microcamera
INTERNAL STORAGE	4GB
EXTERNAL MONITOR	HDMI
INTERFACE	2xUSB
WEIGHT	3 Kg
DIMENSIONS	310 (w) x 170 (d) x 225 (h) mm
POWER SUPPLY	12v DC - 5 A
ENERGY ABSORPTION	60 Watt max
WORKING CONDITIONS	15 - 30 ° C (Rh 5-85% without condensate)
TRANSPORT AND STORAGE CONDITIONS	0 - 50 ° C (Rh 5-85% without condensate)
COMPLIANCE	CE mark
CERTIFICATION	MET mark

MEASUREMENT PRINCIPLE		FIELD	RESOLUTION
HYDRATION (MEL-HYD FX)	Capacitive method	0-100 a.u.	1 a.u.
MELANIN (MEL-HYD FX)	Double wavelength reflectance photometer (λ1=875nm, λ2=660nm)	0-100 a.u.	1 a.u.
pH (pH FX)	pH sensitive glass electrode	2-10	0.1
SEBUM (TAPE FX)	Computer vision processing of sebum-sensitive tape	0-100 u.a.	1 u.a.
ELASTICITY (ELA FX)	Stress/deformation of skin by suction application	0-100 a.u.	1 a.u.

IMAGE SENSOR	MAGNIFICATION	RESOLUTION
MICROCAMERA (CAM FX)	¼ color CMOS image sensor	Two lenses available: 100x and 400x
		1.3 MP - 1280x1024

Callegari srl is a Cattellani Group Company



www.callegari1930.com

Headquarters
Via Eugenio Ugolotti, 1 - 43122 Parma
Manufacturing Site
Via Luigi Natale Vernazzi, 13/A - 43122 Parma
Ph. +39 0521273274 - Fax +39 0521271296
info@catellanigroup.com