

Dual softlaser technology New high-density IIIlt combination technique

PHOTOLIPOLYSIS 639 nm

Stimulation of the mitochondria that increases fat metabolism and its lysis (ATP)

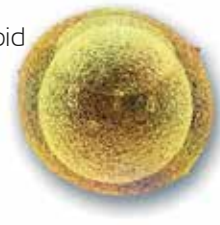
- Activates lysis by increasing ATP.
- Increases cellular metabolism.
- Converts large fatty acid chains (triglycerides) into smaller ones (fatty acids and glycerol) which are expelled and consumed naturally by the body.



PHOTOPERMEABILISATION 830 nm

Increases the permeability of the adipocyte membrane

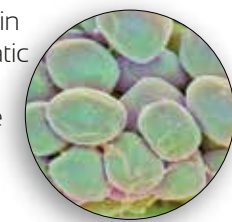
- Stimulates the release of enzymes that cause triglyceride degeneration.
- Increases the permeability of the lipid membrane.
- Double effect: anti-inflammatory and draining.



Polarised waves

ELECTROPERMEABILISATION

- Improves blood and lymphatic microcirculation through electropores in the walls of blood vessels and lymphatic channels.
- The effect of the current modifies the vessel and lymphatic channel polarisation; thus, increasing permeability and decreasing oedema and circulatory stasis.



Combination of CBA and Vacuum

- Promotes and stimulates detoxification, by acting on the lymphatic system. Reactivates cellular metabolism.
- Increases the penetration of active ingredients.
- Activates microcirculation in the dermis.
- Increases oxygenation and nutrition in the tissues.
- Activates the functioning of fibroblasts: increased production of collagen, hyaluronic acid and elastin.
- Improves dermo-epidermal elasticity.
- Acts at the dermo-hypodermic, panniculus, subcutaneous, venous and muscular levels.
- Massage performed using negative pressure.
- The CBA and LASER currents attempt biomodulation of tissue functions by:
 - Increasing epidermal hydration.
 - Photobiomodulation of cellular metabolism, mainly by regulating the mitochondrial function.
 - Activating cellular oxygenation, nutrition and regeneration mechanisms.



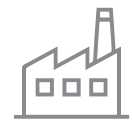
C.032.0.01-ES

NOVASONIX, YOUR TRUSTED PARTNER

Novasonix is a Spanish company with a long history in the health, beauty and medicine sector. Our more than 10 years of experience in the manufacture of medical-beauty equipment has led us to having a presence in more than 12 countries, basing our growth on trust, results and professionalism.

Our main aim is to offer maximum innovation in technology by constant investment in R&D to develop our own patents, such as the CBA current or NSX method, backed by the most stringent ISO quality certifications.

Our customers are another of the main pillars of our company, and for this reason we have developed the Novasonix Partners plan. This is a universe of services we offer to our customers so they can have everything from marketing services to continuing training.



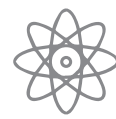
We manufacture in Spain



High profitability



Technical support



R+D: Our own patented technology



Guaranteed results

novasonix

info@novasonix.es
www.novasonix.es
+34 937 208 325

Calle Pla del Ramassar, 52,
Polígono Industrial Pla del Ramassar,
08402, Granollers
BARCELONA



ADIPOshape

BODY REDUCTION AND
REMODELLING



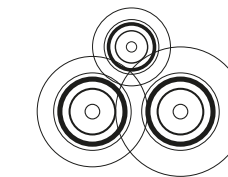
DUAL
LIPOLYTIC
LASER



BIOACTIVE
ATHERMAL
RF



COMBINED
SUCTION
THERAPY



NSX method



novasonix

Medical range lipolytic device

ADIPOshape® aims to improve cellular function in the skin, subcutaneous cellular tissue and ligament-muscular structures.

The ADIPOshape® technology has the ability to stimulate lymphatic and deep tissue drainage. It also stimulates the release of fatty acids from adipocytes, so the body can use them as an energy reserve or remove them via the urinary and lymphatic system.

This process takes place in the fatty layer, without damaging the adjacent tissue. It is, therefore, a **non-invasive and fully effective therapy**.



TECHNICAL FEATURES

Emission type:

Optical power · 6 pads with 13 units; 10 units of 25 mW at 639 nm; and 3 units of 830 mW 50 mW (+0.36 mW).

Suction:

Max 200 mBar / Max air flow 7 LPM

High Voltage Pulsed Current (HVPC) system:

Post insulation application voltage 5 Vpp / Output current 0.1 A.



ADIPOshape main functions with NSX technology



• **New synergistic laser therapy:** Double wavelength laser evacuates and removes accumulated fats in actively, non-invasively and naturally.



• **Fat reduction:** The combination of the dual laser stimulates activity in the mitochondria, transforming long chain fatty acids (triglycerides) into single chains.



• **Electropermeabilisation of the tissue:** The polarised waves allow passage through the cell membrane, blood vessels and lymphatic system, making the area more permeable.



• **Dermal regeneration:** Firm tissues and a stimulated dermis are the results of the combination of the dual softlaser and polarised waves: a winning mix that promotes the production of neo-collagen in fibroblasts.

"NSX method only with Novasonix"

INDICATIONS

• **Preparation and repair of the skin before and after body surgery:** liposuction, abdominoplasty, dermolipectomy.

• **In combination with body medicinal and beauty treatments:** mesotherapy, intralipotherapy, radiofrequency.

• **Cellulitis.**

• **General obesity.**

• **Body remodelling.**

• **Oedema.**

• **Localised fat.**

At the perisurgical level:

- Helps reabsorb bruises.
- Makes the tissue uniform following standard techniques: liposuction and laser lipolysis.

At the pre-operative level:

- Helps soften the fibrous layer of the hypodermis facilitating the passage of the cannula in techniques such as liposuction.
- In post-surgical treatment, works with ultrasound to break down persistent fibrosis.



ADIPOshape benefits

- The combination of the laser with patented CBA currents and the VACUUM function leads to better drainage, activates circulation, increases oxygenation and nutrition of the tissues and firms the skin.
- Photolipolysis 639 nm stimulates the mitochondria, which increases fat metabolism and its lysis (ATP).
- Photopermeabilisation 830nm increases the permeability of the adipocyte membrane and stimulates the release of enzymes leading to triglyceride breakdown.
- Increases the permeability of the lipid membrane.
- **ADIPOshape®** achieves a double effect: anti-inflammatory and draining.
- Non-invasive treatment.
- Enhances the action of the selected active ingredient.
- Tensor "flash" effect increases with the number of sessions.
- Pleasant sensation of heat, comfort and relaxation.

*ACTUAL EXAMPLES, original photographs not altered digitally.



Abdomen modelling. Localised fat reduction. 10 sessions



Abdomen modelling. Localised fat reduction. 10 sessions

